

Client: **Con Edison**

Project: **Damage Assessment App**

Deliverable: **Application Flow**

Authors:

Derick Melander, UX Director

Date: Thu Dec 26 2013

Document: ConEdison_DA_Functional_Flow_dm_26dec13_02.graffle

Project Goal: Con Edison, Damage Assessment Application

Design an application that is simple to use
and built for optimal stability in a crisis.

We will design for immediate deployment, keeping a running tally of all possible features as it is likely that not all features will be implemented for this phase.

What is an application flow?



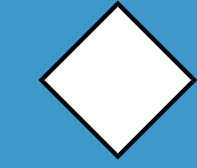

An application flow uses a visual vocabulary of symbols to describe a system, structure, or process. In this case, the vocabulary is used to describe, at a high level, the structure and/or flow of a user experience.

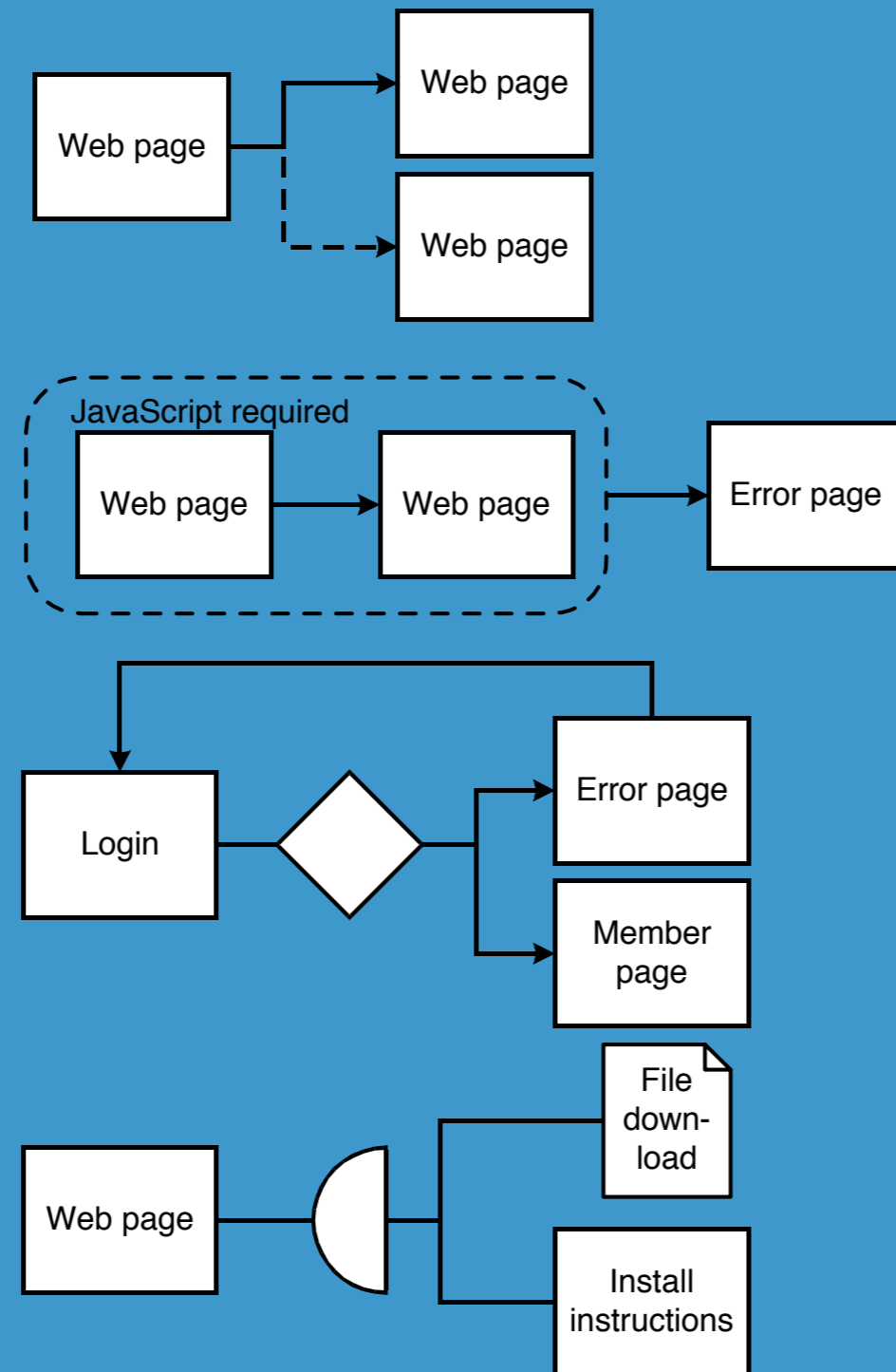
Application flows, are used by five primary audiences:

- Project sponsors and managers use them to obtain a general sense of the scope and form of the project.
- Content producers use them to derive content requirements.
- Visual and interface designers use them to derive a count of how many unique page designs must be produced, and to obtain an initial sense of the navigational and interface requirements for these designs.
- Technologists use them to derive functional requirements.
- Information architects and interaction designers use them to develop detailed navigational and interface requirements for each page.

Jesse James Garrett , A visual vocabulary, for describing information architecture and interaction design, jg.net, March 2002

Application Flow Key

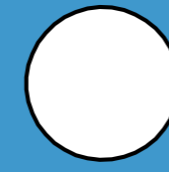
- 
Conditional Connector:
 System may or may not provide path to user (based on pre-existing conditions)
- 
Conditional Area:
 One or more conditions applies to a group of pages. These areas are associated with a result generated if conditions not fulfilled.
- 
Decision Point:
 User action may generate one of a number of results for a given path.
- 
Concurrent Set:
 User action generates multiple, simultaneous results.



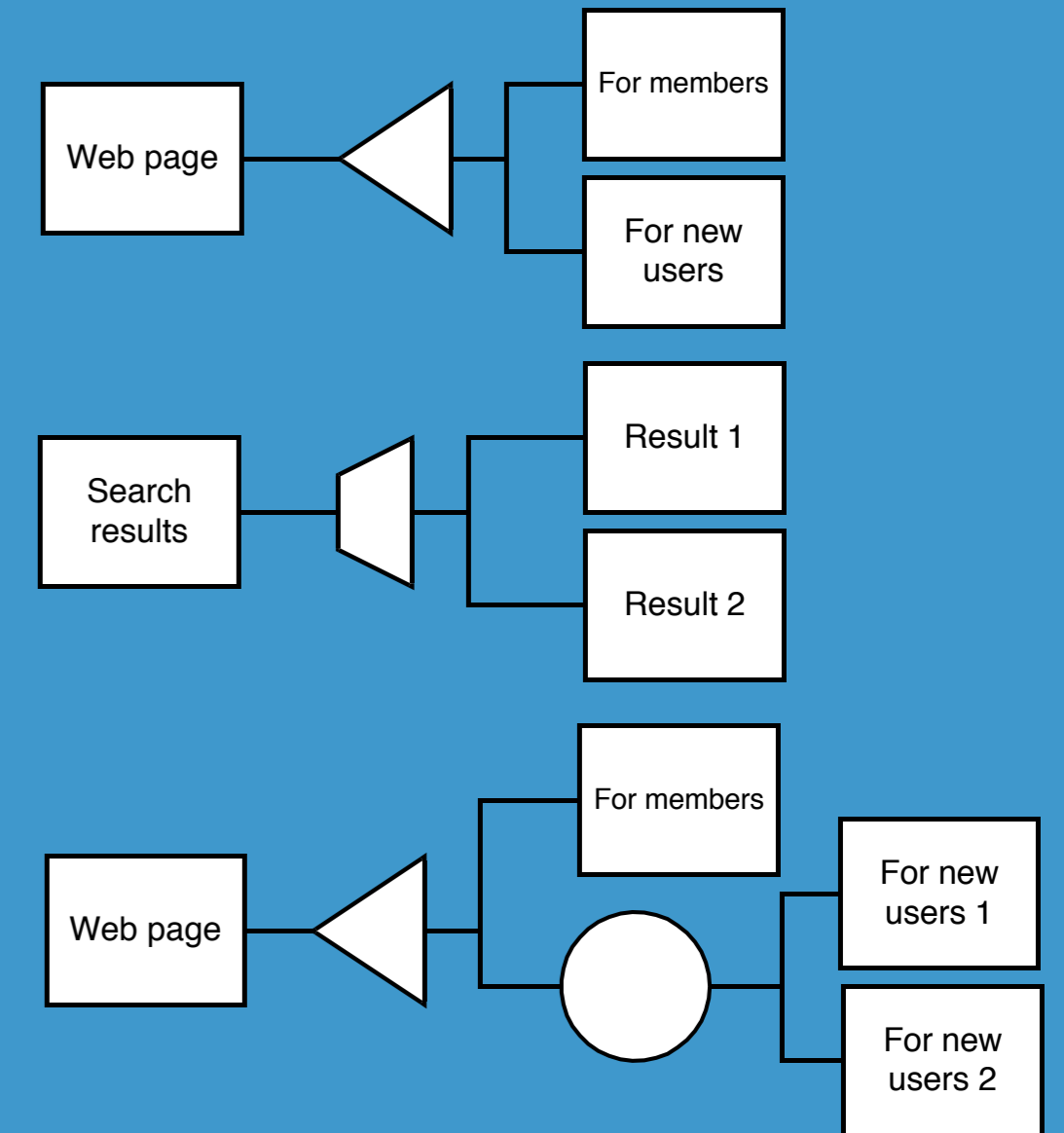
Conditional Branch:
 Same as decision point, but system decides result previous to user action (a single path is presented to user).



Conditional Selector:
 Same as branch, but paths are not mutually exclusive.

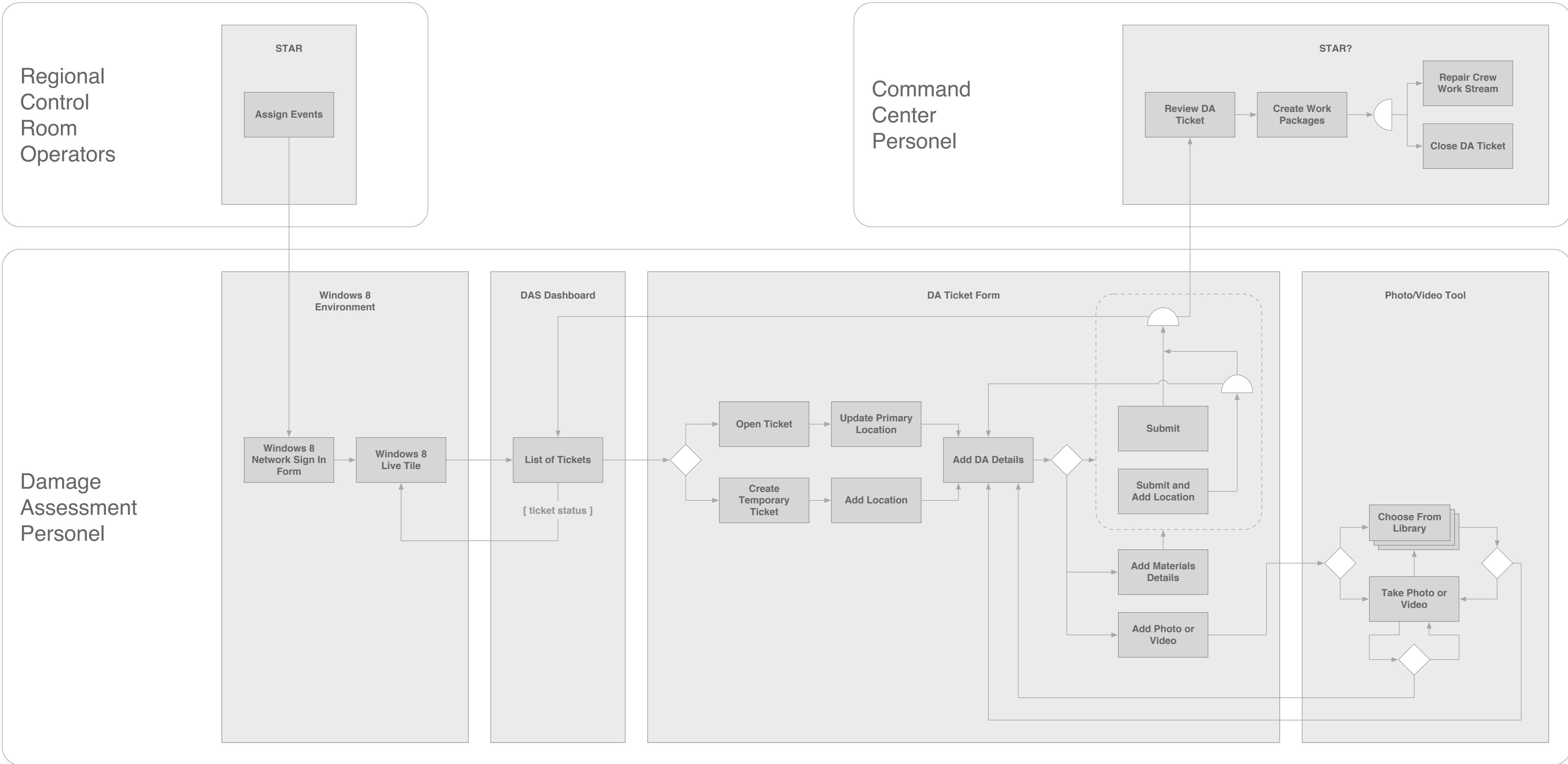


Cluster:
 System allows more than one path for certain conditions. Appears downstream from conditional.



Created by Scott Larson. Based on work by Jesse James Garrett.

Application Flow



Thank you

Contact:

Carolyn Freeman, Producer
cfreeman@infusion.com

Derick Melander, UX Director
dmelander@infusion.com

599 Broadway
New York, NY 10012
United States
T +1 212 732 6100
F +1 212 732 3335
www.infusion.com